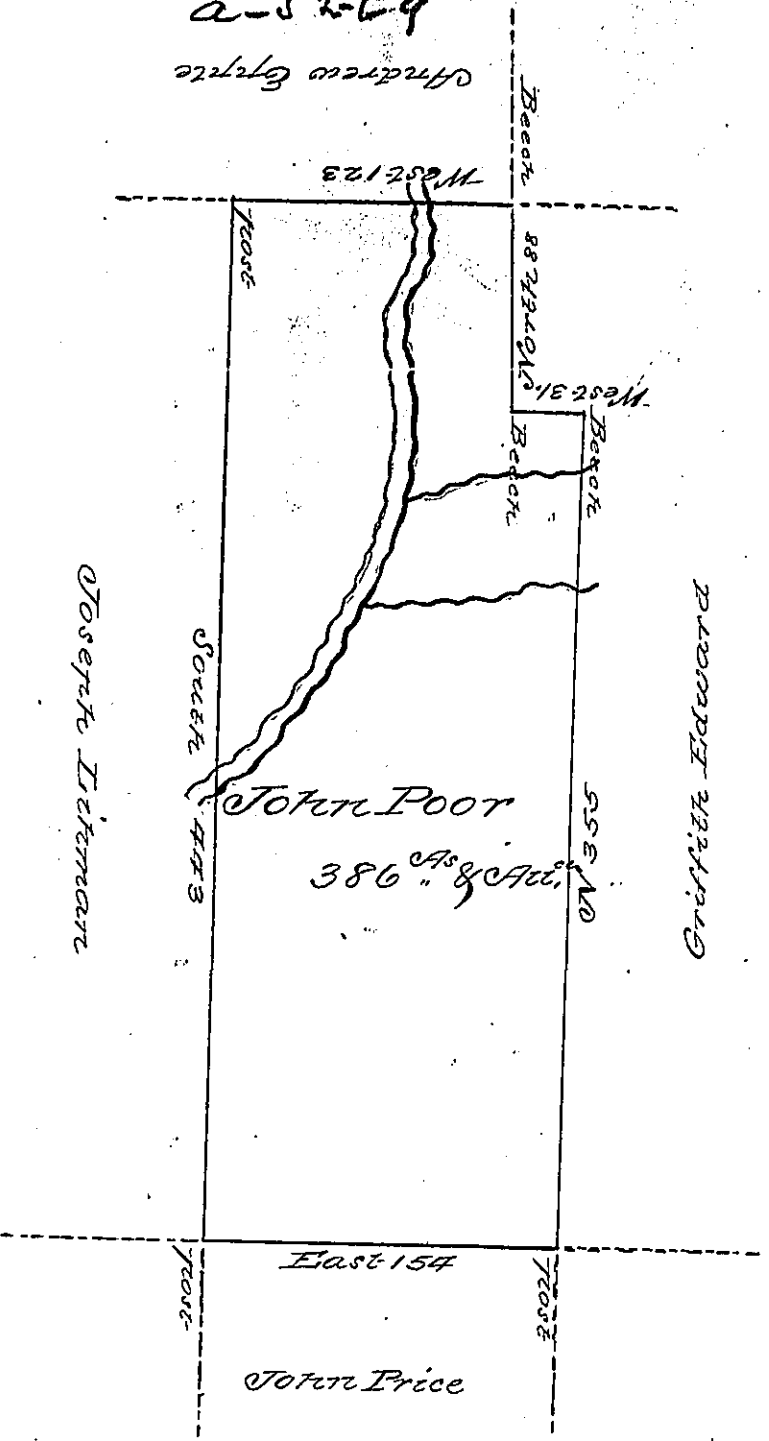


2-52-69
Andrew Gyrite



Situate on the North fork of Shade Creek in Luen-
mationing Township now Somerset County surveyed
ed 12th of July 1794 by Geo: Woods Esqr late D.S.
as appears by his Official Draft remaining in my
Office, in pursuance of a Warrant granted to John
Poor dated 4th Feby 1794. certified this 25th Day of
January 1804 by

John McClean Deputy

To Samuel Cochran Esqr }
Surveyor General }

IN TESTIMONY that the above is a copy of the original remaining on file in the
Department of Internal Affairs of Pennsylvania, made con-
formably to an Act of Assembly approved the 16th day of
February, 1833, I have hereunto set my Hand and caused
the Seal of said Department to be affixed at Harrisburg, this

seventh day of December 1897

James Watta
Secretary of Internal Affairs.